

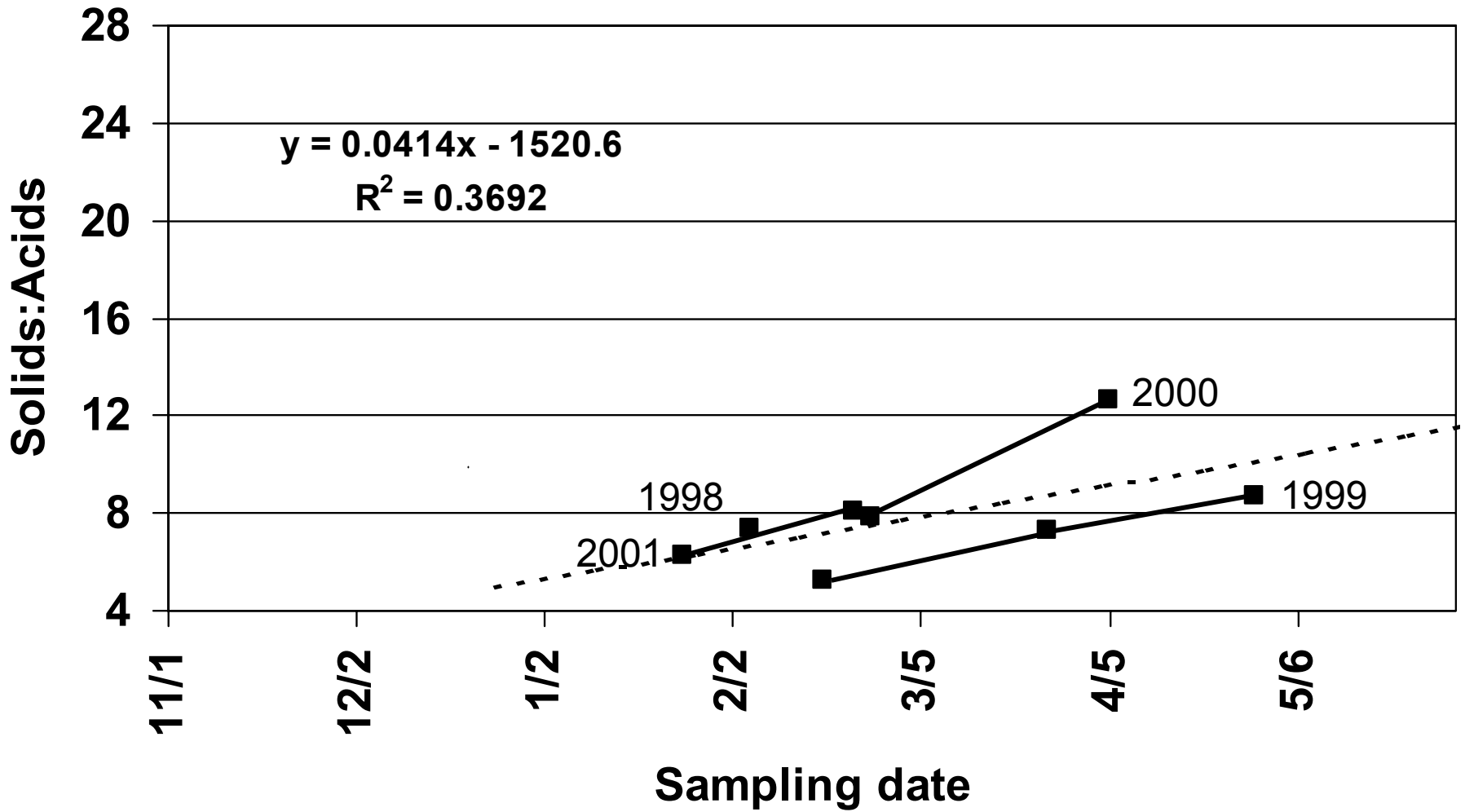
Graphs of Total Soluble Solids:Acid Ratio for TDE Mandarin Hybrids

M. L. Roose and T. E. Williams

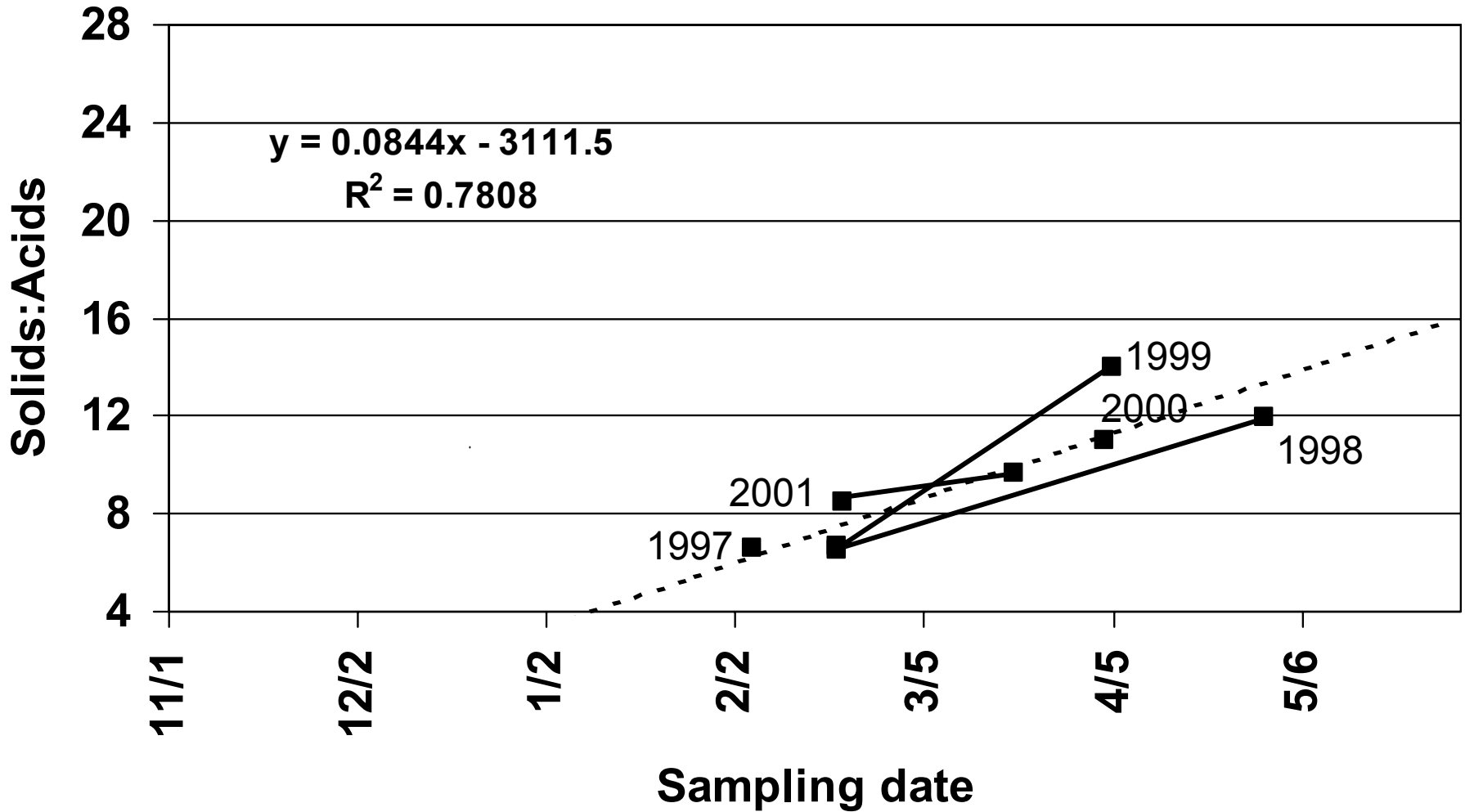
Department of Botany and Plant Sciences, University of California,
Riverside, CA 92521

- Samples of 10-15 fruit per tree, 2-4 trees per location were sampled from 4-6 locations, returned to Riverside and juiced using a hand reamer. Samples were collected from trees on various rootstocks, mostly Carrizo and C35 citranges.
- Juice was analyzed for solids content using a refractometer and for total acid (as citric acid) by titration at Riverside or in the Lindcove Fruit Analysis Laboratory
- Values plotted are the mean solids:acid ratio of all samples from each date. Data values for samples collected in the same year are connected by solid lines.
- The dashed line was fit by linear regression using all datapoints, ignoring year. The regression equation is shown in each graph.
- Abbreviations: CVARS= Coachella Valley Agricultural Research Station, Indio, California.

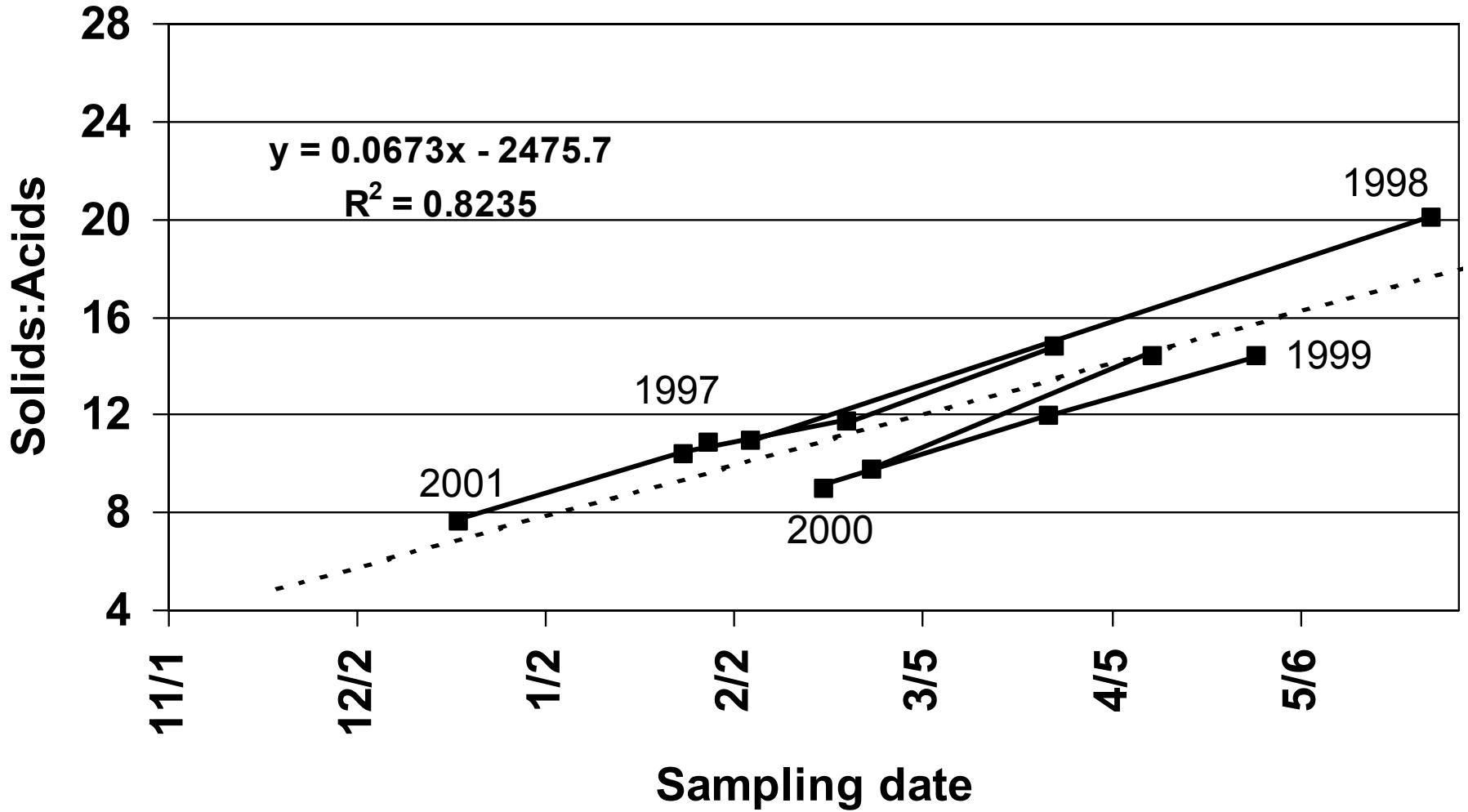
Solids:Acid of TDE2 at Santa Paula, CA



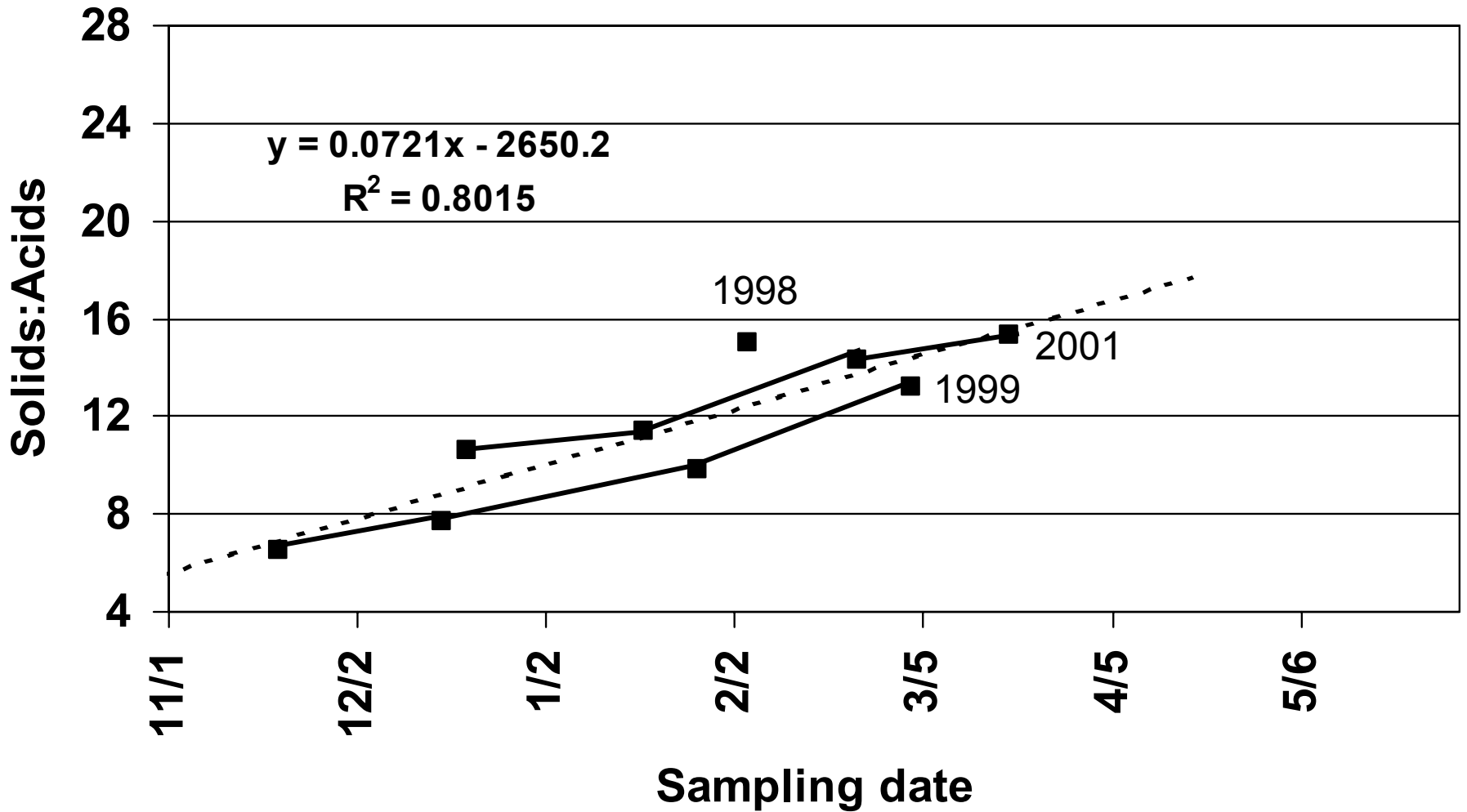
Solids:Acid of TDE2 at Valley Center, CA



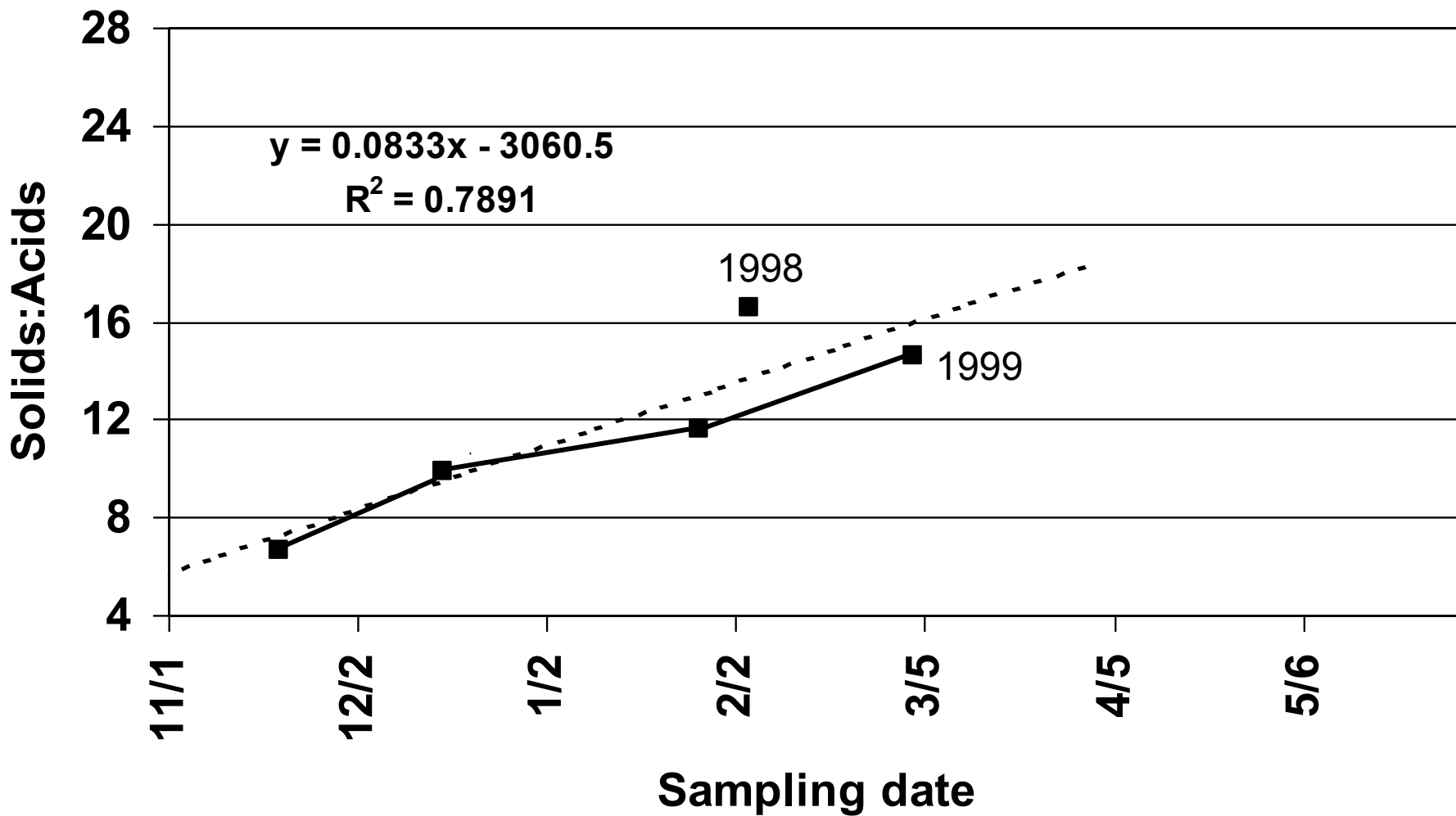
Solids:Acid of TDE2 at Ojai, CA



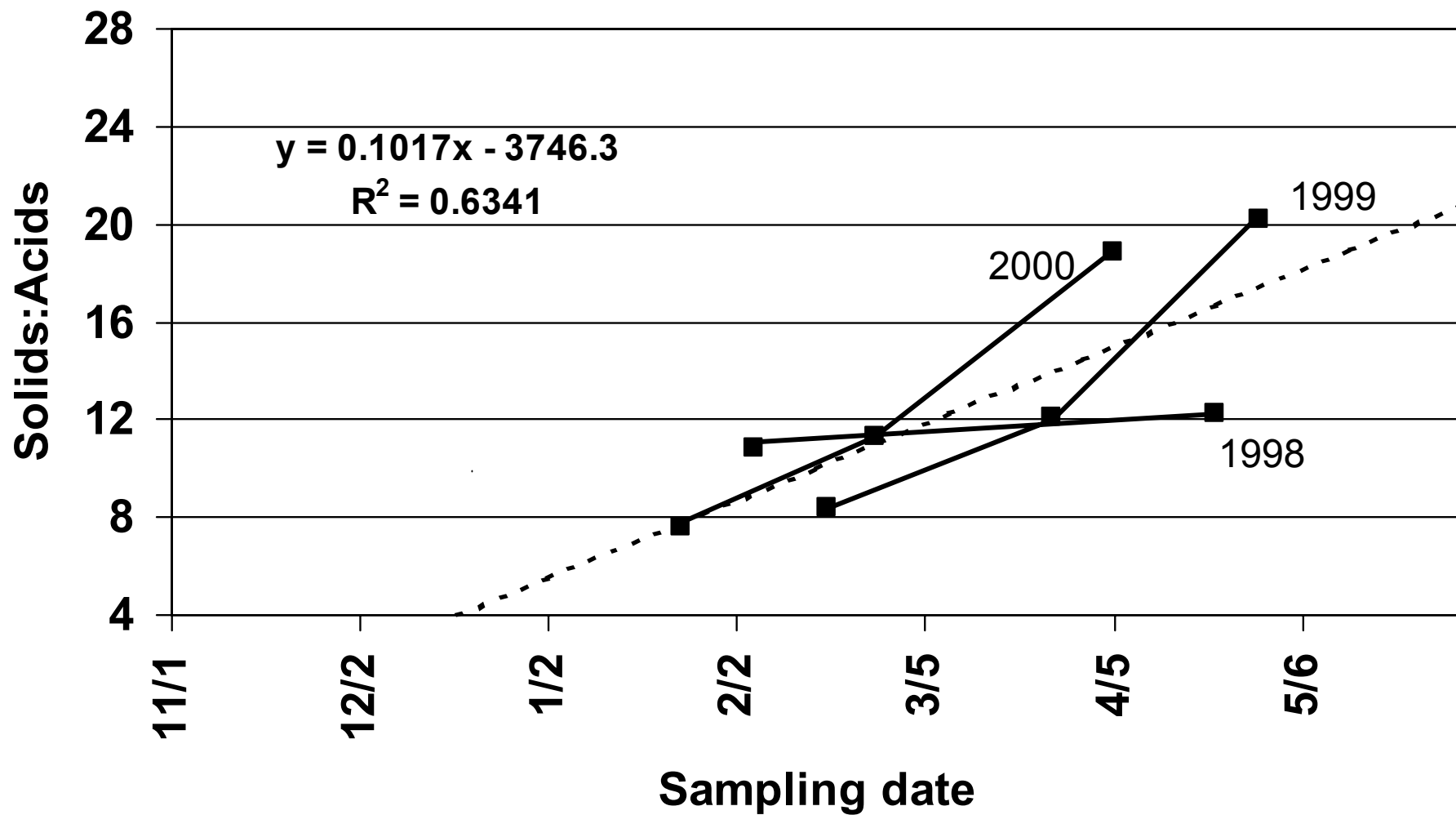
Solids:Acid of TDE2 at Thermal, CA



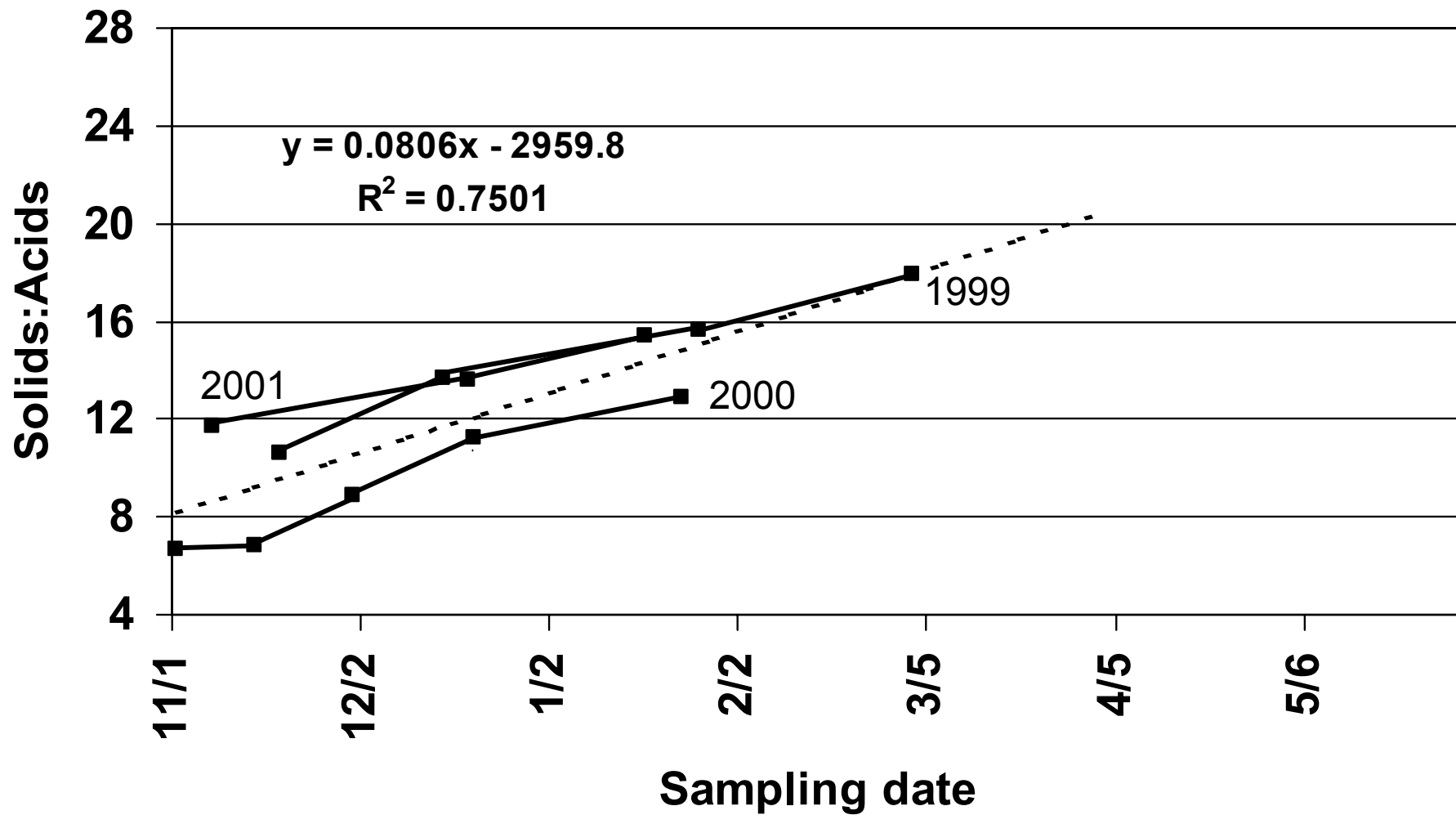
Solids:Acid of TDE2 at CVARS



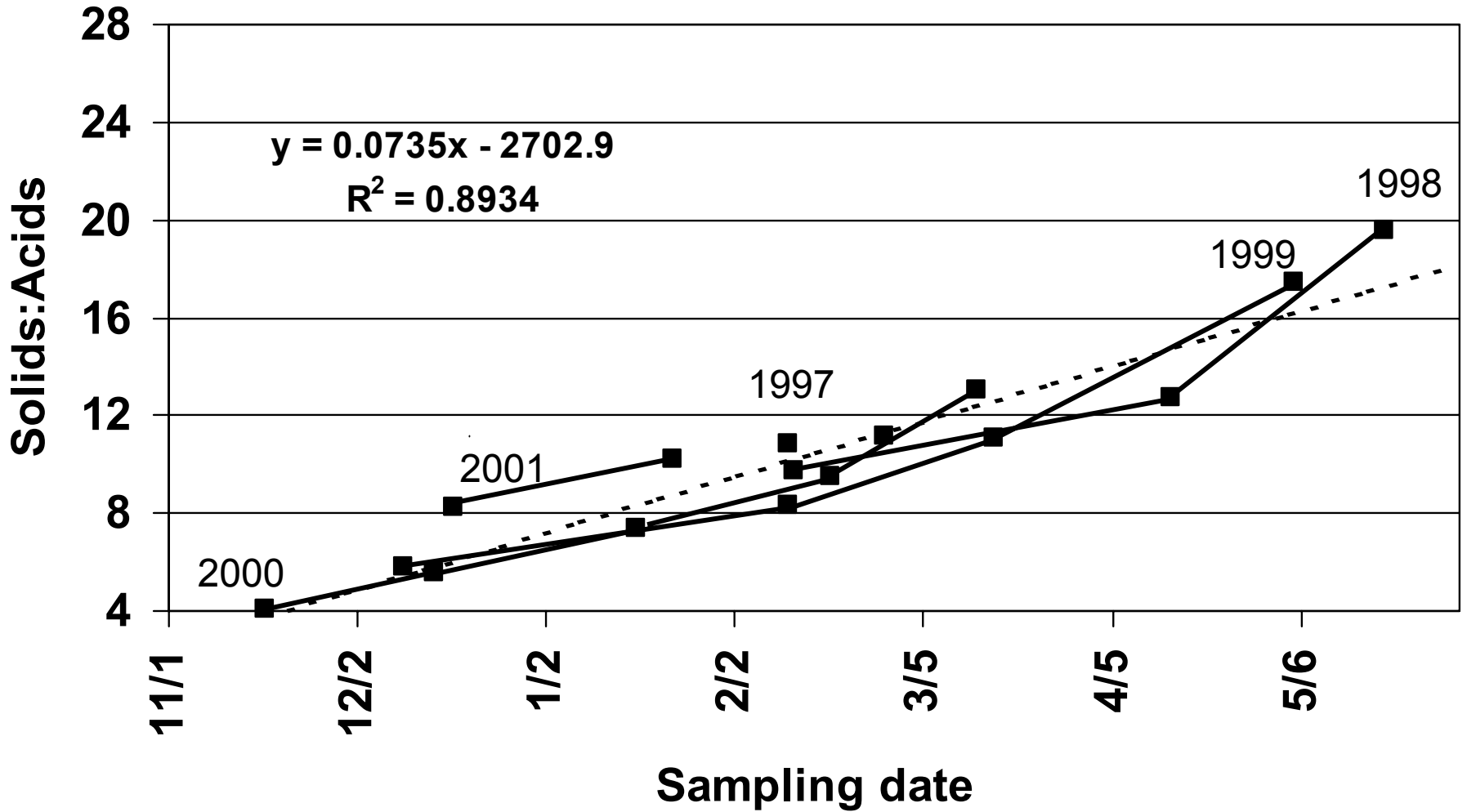
Solids:Acid of TDE3 at Santa Paula, CA



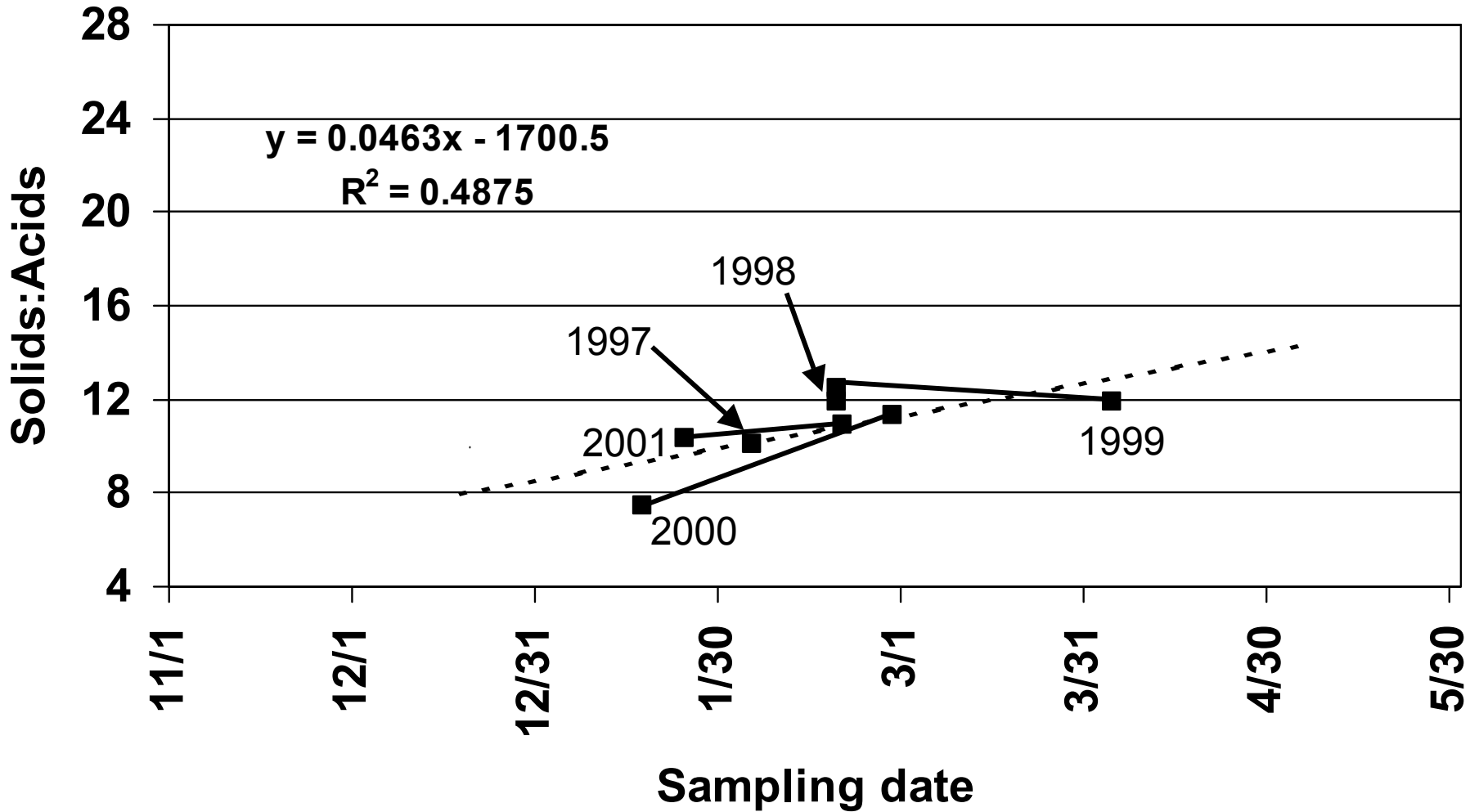
Solids:Acid of TDE3 at CVARS



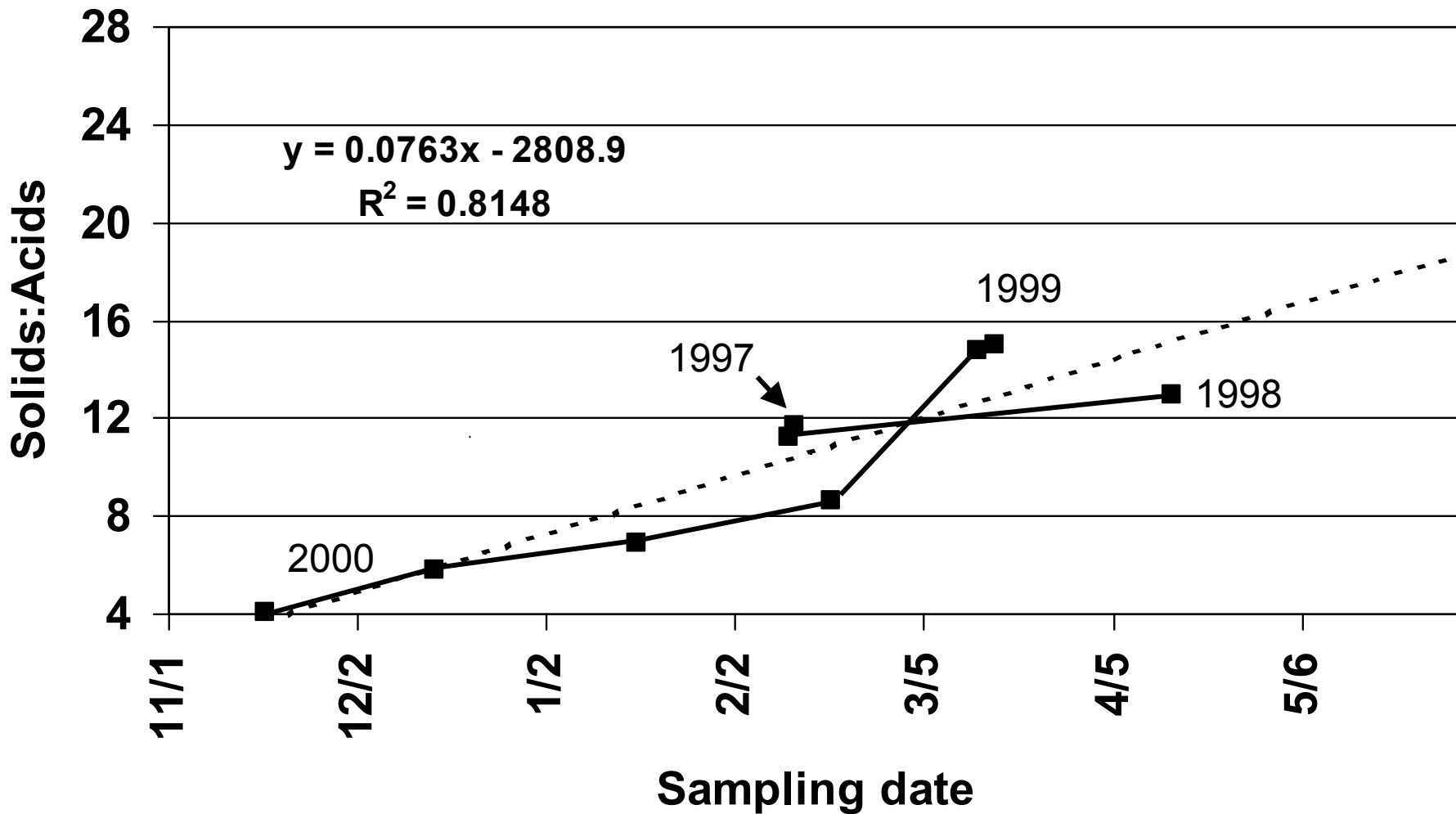
Solids:Acid of TDE3 at Lindcove, CA



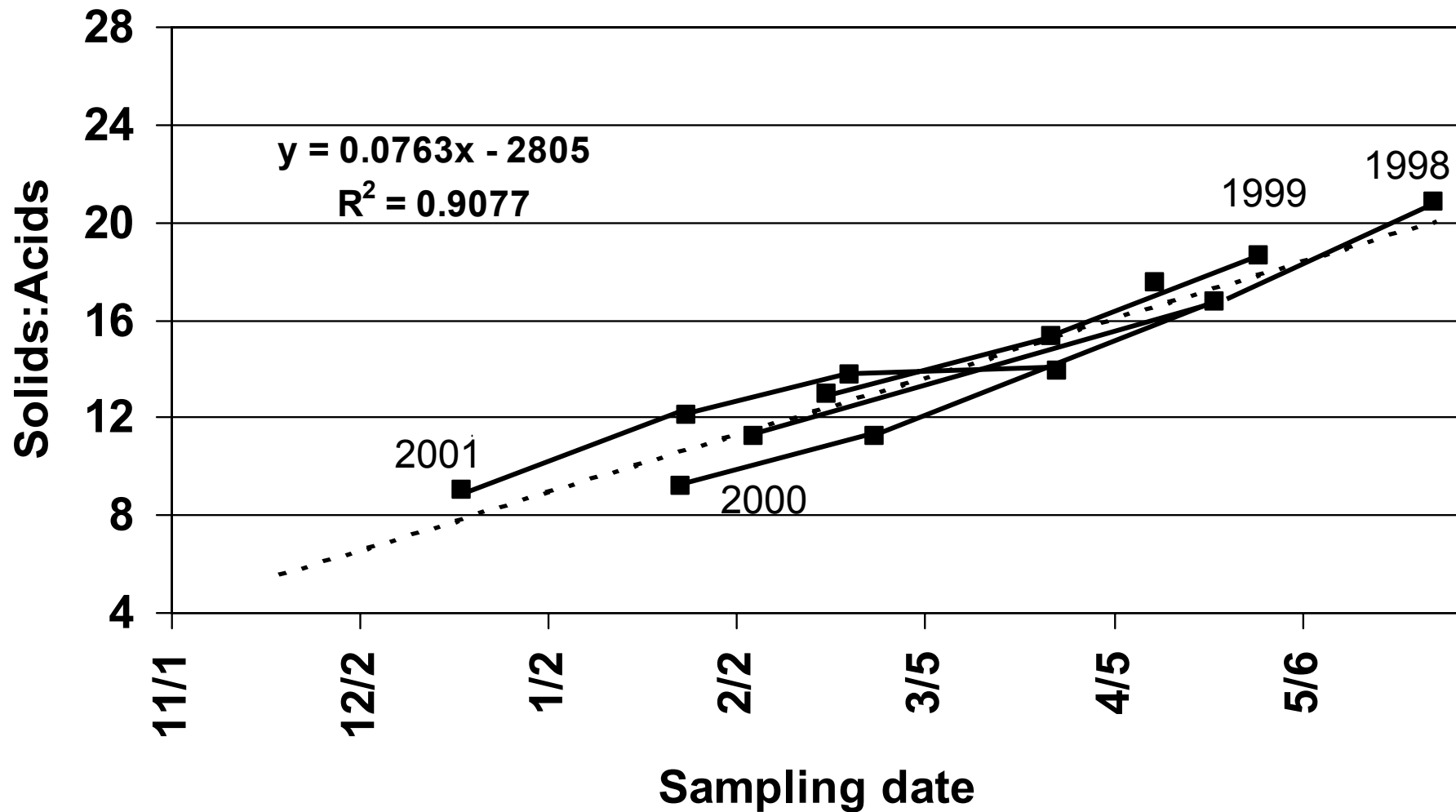
Solids:Acid of TDE3 at Valley Center, CA



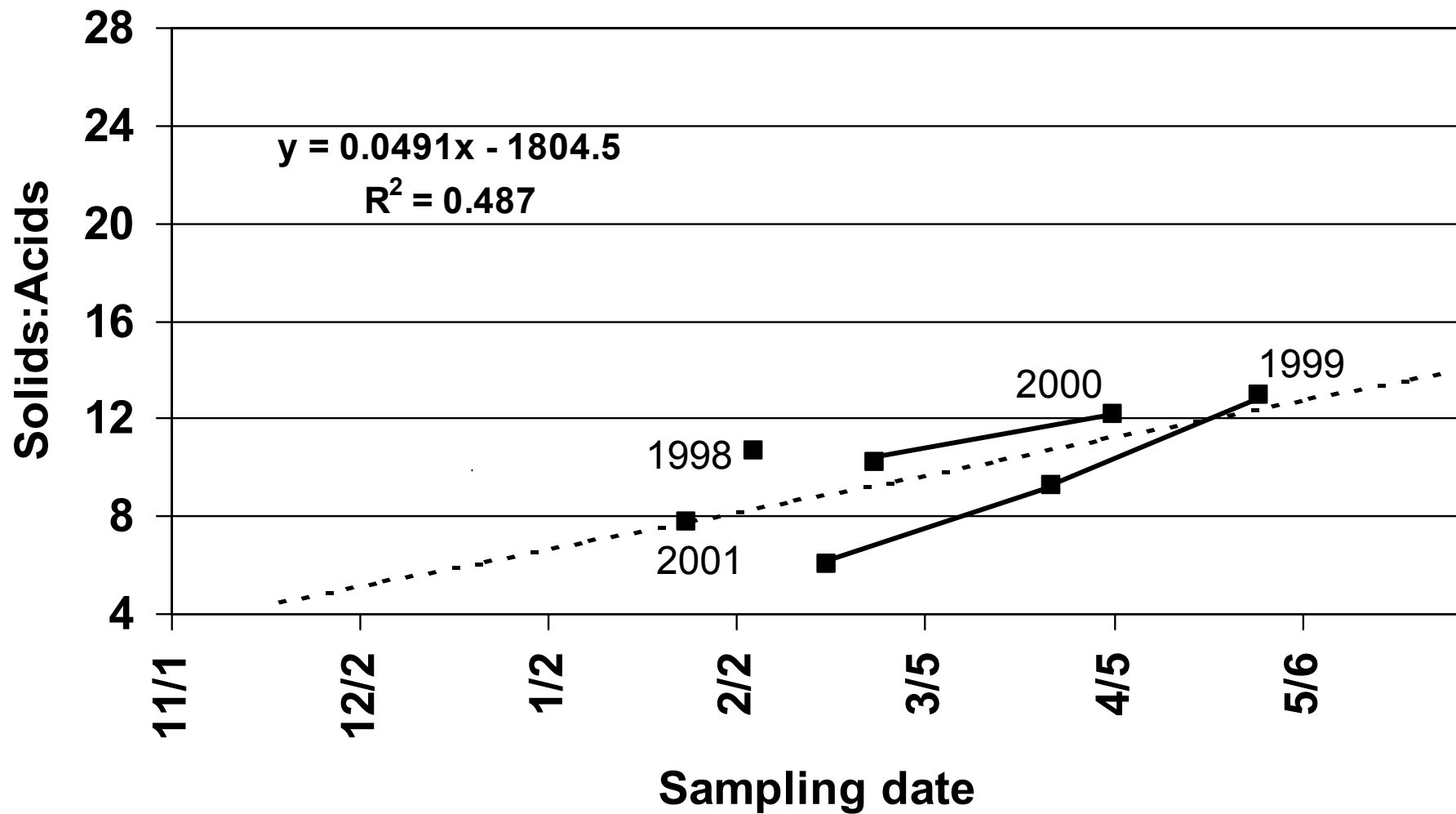
Solids:Acid of TDE3 at Orange Cove, CA



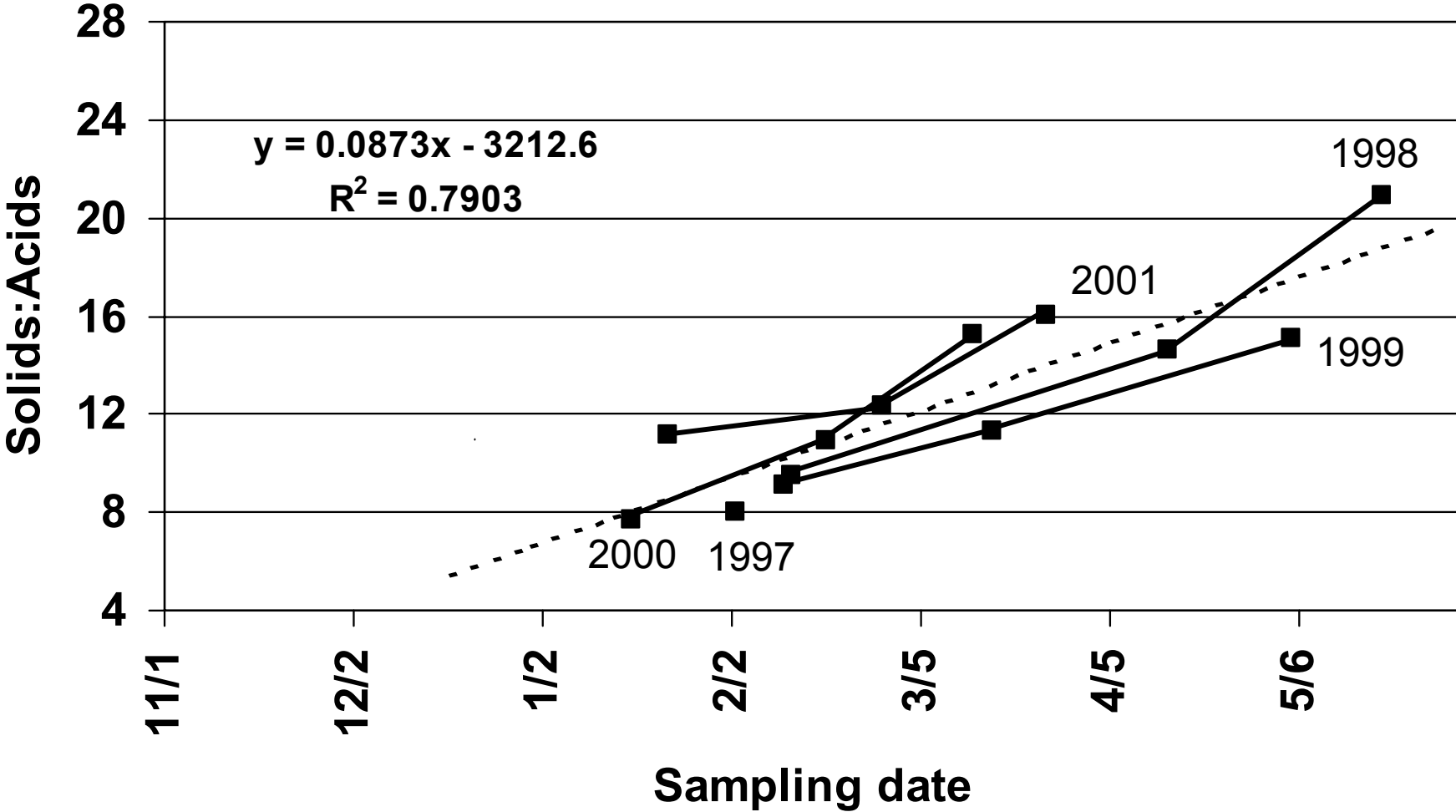
Solids:Acid of TDE3 at Ojai, CA



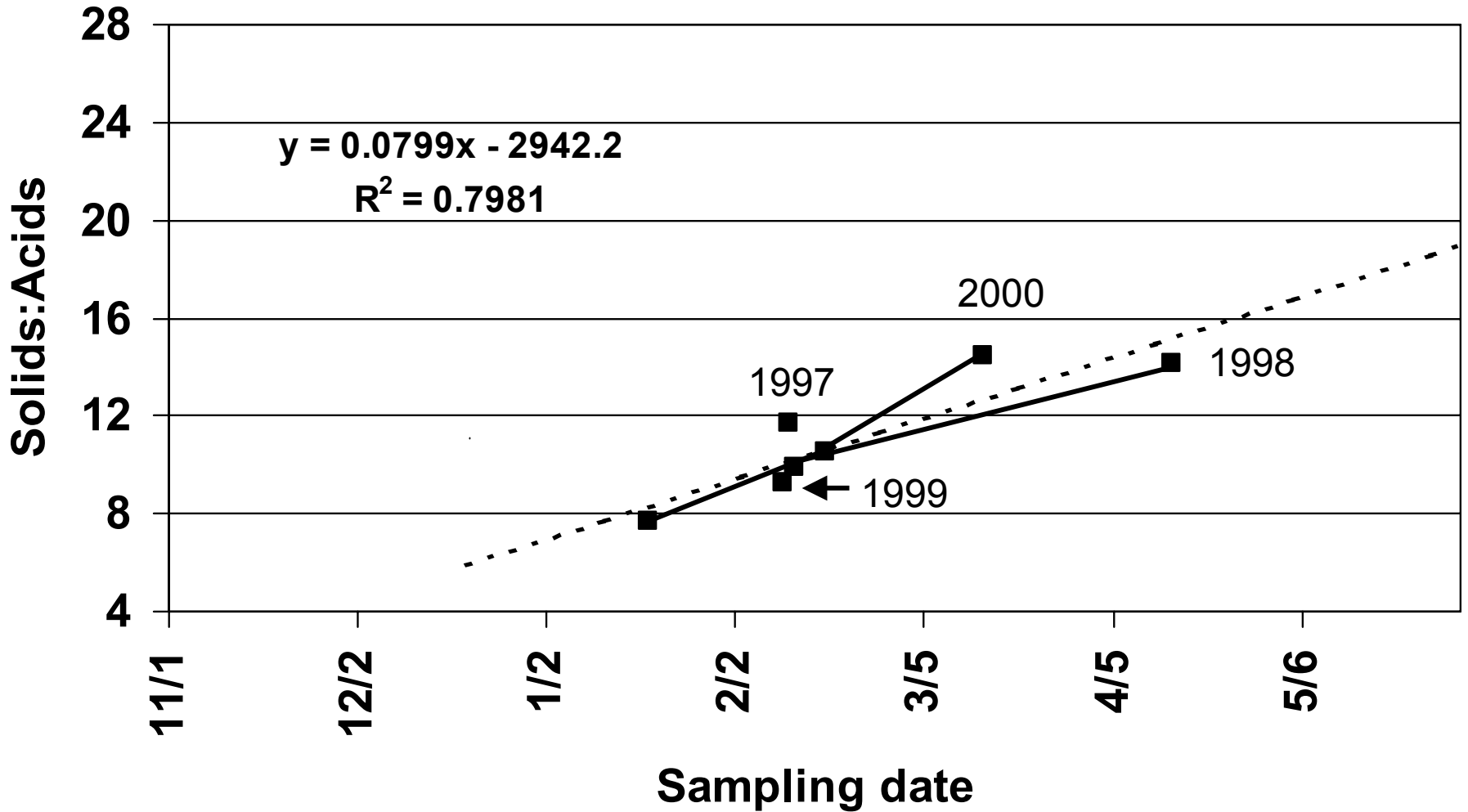
Solids:Acid of TDE4 at Santa Paula, CA



Solids:Acid of TDE4 at Lindcove, CA



Solids:Acid of TDE4 at Orange Cove, CA



Solids:Acid of TDE4 at Ojai, CA

